

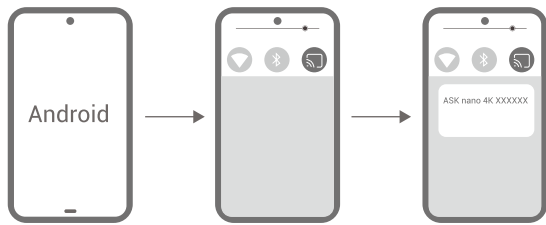
Cast from iOS

1. Confirm **RX** is in the TX/DLNA/AirPlay mode.
 - See the current mode above the TV graphic on the display/product
2. Connect iOS device to hotspot of RX from Wi-Fi Settings.
 - Wi-Fi Network: 「ASK nano 4K-XXXXXX」
 - Password: 12345678
3. From Quick Settings, select 「Screen Mirroring」 to mirror the display.



Cast from Android

1. Set **RX** mode to Miracast.
 - See the current mode above the TV graphic on the display/product
2. Choose [Screen Cast] or [Wireless Projection] on the Android device.
3. Connect to 「ASK nano 4K-XXXXXX」



Specification

Transmitter	
USB-C	DisplayPort 1.2
Supported Input Resolution	1280x720@50/60 1920x1080@50/60 3840x2160@24/25/30
Receiver	
Power	USB-C 5V DC/1A Max 3.0W
HDMI	HDMI 2.0
Output Resolution	3840X2160@60

Trouble Shooting

Q: What if PC casting fails?

- A: • Check the display which connects to RX and make sure the interface is TX/Airplay/DLNA Mode.
- Check the SPEC of your laptop and make sure the USB-C port support DisplayPort 1.3 or above.

Q: What is the differences between the two cast Mode?

- A: • **TX/DLNA/AirPlay Mode**
Laptop or IOS device can cast in this mode
- **Miracast Mode**
Android phone can cast in this mode
ASK nano TX and IOS device could not cast in this mode

Q: What if I want to exit PC projection?

- A: • Press button on TX

Q: Can I cast tablet or phone by TX?

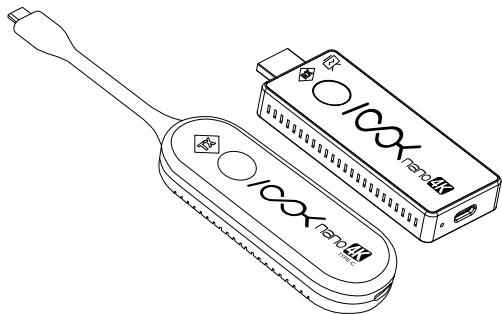
- A: • Yes, but not all tablet or phone can support DisplayPort output through USB-C. Here is the list of compatible mobile device:
- tablet: Ipad Pro 2021 and above model
 - phone : Iphone 15 and above model

If you have any questions , please contact our after-sale support



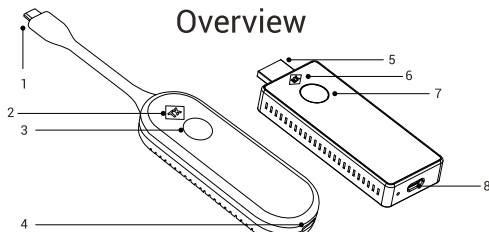
support@rgblink.com

ASK nano 4K
USB-C



USER MANUAL

Overview



ASK nano 4K USB-C Transmitter (TX)

1. USB-C plug (connect to laptop)
2. Indicator light

Status	Meaning
Solid Red	Powered
Blinking Red	TX is searching for RX
Blinking Blue	Waiting for connection
Solid Blue	Connected

3. Cast button
 - o Short press to stop/continue projecting
4. USB-C (female) for firmware update

ASK nano 4K Receiver (RX)

5. HDMI jack (connect to display)
6. Indicator light

Status	Meaning
Blinking Blue	Ready for casting

7. Mode Switch Button
 - o Short press to switch between TX/DLNA/AirPlay & Miracast Mode
- 8.USB-C For power supply

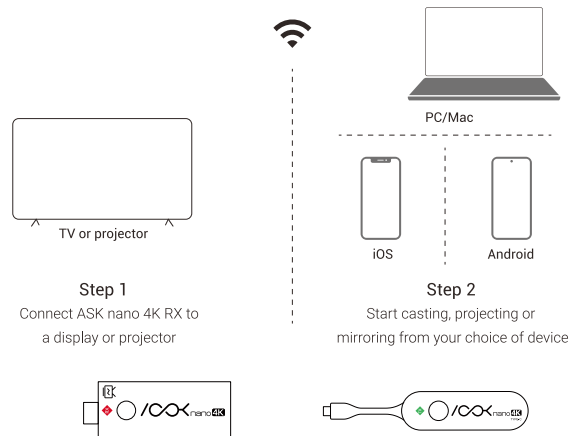
In the Box

ASK nano 4K USB-C Transmitter	1
ASK nano 4K Receiver	1
USB-C Cable	1
HDMI male to female extender	1

Quick Start

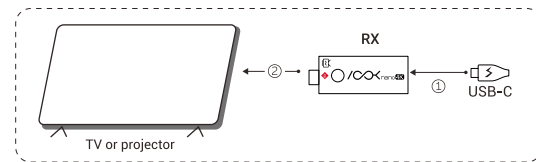
STEP 1 : Connect RX to HDMI IN on TV, projector or other devices and power it with USB A-C cable.

STEP 2 : Connect TX to USB-C port on PC or laptop.



STEP 1 : Connect receiver

1. Connect **USB-C port on RX** to a USB port on the display or other USB power source(not included).
2. Plug HDMI on RX to the HDMI IN of TV or projector.



STEP 2 : Start casting

Project or Extend Laptop Display with TX

1. Check the display which connects to RX is in the interface of TX/Airplay/DLNA Mode.
2. Plug USB-C male on TX to Laptop.

