

Preliminary



RGBlink®



mini-mx SDI

10 Channel Streaming Video Mixer

mini-mx SDI features four 4K HDMI 2.0 inputs and four 3G SDI inputs, one UVC and one NDI bi-direction input & output, supporting digital embedded audio and video signals from PC, Camera and more.

Also analog audio by 2 x Phamton, 1 x Line in and 1 x Mic, and a blue tooth audio.

There are two separately HDMI outputs for multi-viewer Preview, Program or Test Pattern. One USB 3.0 output supports YUY2 and MJPEG capture formats, which can be recognized as a webcam for streaming to Facebook, YouTube, ZOOM, etc.

The UVC bi-direction for USB disk recording or wireless speaker or wireless microphone, such as RGBlink AI mini.

The ethernet port with NDI license enable is bi-direction too, NDI encoder and decoder can work at the same time.

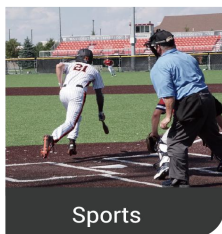
mini-mx SDI is built in with 5-inch TFT touch panel for menu operation and multiviewer video display.

Compared with mini-mx, mini-mx SDI has 4 more 3G SDI inputs and a ready to license NDI bi-direction in & out, also Noise Reduction, Equalizer, Echo, Reverb, Voice Fusion for audio inputs. Else it is the same to mini-mx, which features including dynamic output control, multi-view preview, picture in picture, chroma Key, luma Key, transitions, on board PTZ camera controls and much more.

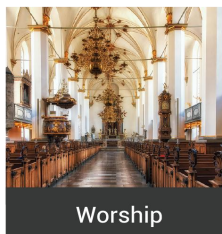
mini-mx SDI is web APP ready, also integrated with TAO Cloud for remote control and restream to at least 4 content platforms at the same time.



Education



Sports



Worship



Events

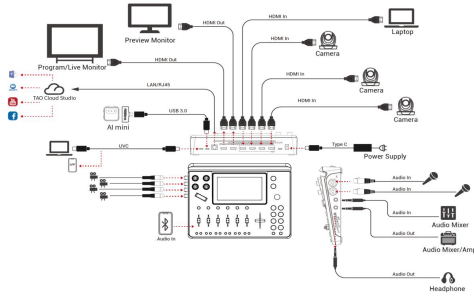


Conference

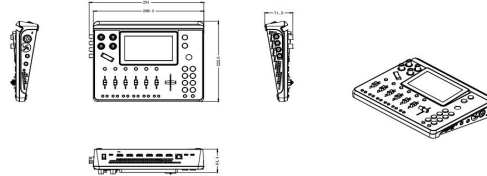
Key Features

- Embedded 5.5-inch TFT and touchscreen
- 10 input connectors (4 x HDMI 2.0, 4 x 3G-SDI, 2K UVC, and 2K NDI)
- 6-CH customizable video inputs
- Maximum 8 channels for audio mixing
- Dynamic text overlay/scoreboard
- Configurable VFA (video follow audio)
- 2-CH independent HD HDMI
- 2K streaming and live via IP and UVC
- Streaming supports NDI | HX3
- Streaming and management via RGBlink TAO Cloud
- Manual real-time control of PTZ cameras, such as zoom in/out, rotation, and focus, via VISCA or NDI
- Third-party control and integration via free RGBlink Central Control Protocol

Application



Dimension



Specification

mini series mini-mx SDI

Connectors	Input	HDMI 4K	4 x HDMI-A	
		SDI 3G	4 x SDI	
		NDI	1 x NDI	
	Output	HDMI 2K	2 x HDMI-A	
		USB (Record)	1 x USB-C	
		USB (Stream)	1 x USB-C	
		NDI	1 x NDI	
Audio	MIC IN 1	1 x 6.35mm XLR + TS Jack (48V Phantom Power)		
	MIC IN 2	1 x 6.35mm XLR + TS Jack		
	LINE IN	1 x 6.35mm TRS Jack		
	OUT	1 x 6.35mm TRS Jack		
		1 x 3.5mm mini-Jack		
Communication	LAN	1 x RJ45		
Power	Power Supply	1 x USB-C		
Performance	Input Resolution	HDMI	1280 x 720@50/59.94/60 1024 x 768@60 1280 x 768@60 1280 x 800@60 1280 x 1024@60 1366 x 768@60 1366 x 768@60 1440 x 900@60 1600 x 1200@60 1680 x 1050@60 1920 x 1200@60 1920 x 1080i@50/59.94/60 1920 x 1080p@23.98/24/25/29.97/30/50/59.94/60 3840 x 2160p@30/50/60	
	Output Resolution	HDMI/USB (Webcam)	1280 x 720@50/60 1920 x 1080@24/25/30/50/60	
	Video	Video Formats	HDMI 2.0 HDCP 2.2	
		Color Space	RGB 8bit	
		Video Sampling	4:4:4 YUV	
		Video Latency	<4 frames	
	Audio	Line In Delay	up to 8 frames	
		Audio Format	HDMI	Linear PCM, 24 bits/48 kHz, 2 ch
		USB	Linear PCM, 16 bits/48 kHz, 2 ch	
	Record/Storage	Record Formats	MP4	
Disk Formats		FAT32(≤32 GB) exFAT(64GB~2T)		
Supported Standards	HDMI	2.0		
	USB	3.0		
	H.265	ITU-T H.265/ ISO/IEC 23008-2		
Power	Compatibility	USB Power Delivery (PD) 3.0		
	Supported Cables	Certified USB PD Aware		
	Input Voltage	USB-C 12V/3A		
	Maximum Power	36W		
Environment	Temperature	0℃~45℃		
	Humidity	10%~85% RH		
Physical	Net Weight	1.48kg		
	Packaged Weight	2.80kg		
	Net Dimension	280.0mm x 222.6mm x 63.5mm		
	Packaged Dimension	332.0mm x 238.5mm x 109.0mm		

Order Codes

Order Codes	Item
230-0009-01-0	mini-mx SDI

Contact us

Tel: +86-592-5771197
 Fax: +86-592-5788216
 E-mail: sales@rgblink.com
 Headquarter: Room 601A, No. 37-3 Banshang community, Building 3,
 Xinke Plaza, Torch Hi-Tech Industrial Development Zone, Xiamen, China



www.rgblink.com