

# Preliminary



# RGBlink®



## mini-edge SDI

### 10 Channel All-in-One Switcher

mini-edge SDI features four 4K HDMI 2.0 inputs and four 3G SDI inputs, one UVC and one NDI bi-direction input & output, supporting digital embedded audio and video signals from PC, Camera and more. Also analog audio by 1xPhantom, 1xLine in and 1xMic, and a blue tooth audio.

There are two separately HDMI outputs for multi-viewer Preview, Program or Test Pattern. One USB 3.0 output supports YUY2 and MJPEG capture formats, which can be recognized as webcam for streaming to Facebook, YouTube, ZOOM, etc.

The UVC bi-direction for USB disk recording or wireless speaker or wireless microphone, such as RGBlink AI mini.

The ethernet port with NDI license enable is bi-direction too, NDI encoder and decoder can work at the same time.

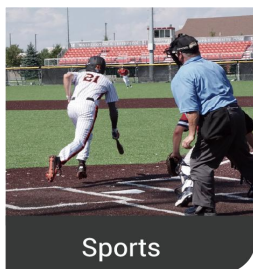
mini-edge SDI is built in with 5-inch TFT panel for menu operation and multiviewer video display.

Compared with mini-edge, mini-edge SDI has 4 more 3G SDI inputs and a ready to license NDI bi-direction in & out, also noise reduction for audio inputs. Else it is the same to mini-edge, which features including dynamic output control, multi-view preview, picture in picture, chroma Key, luma Key, transitions, on board PTZ camera controls and much more.

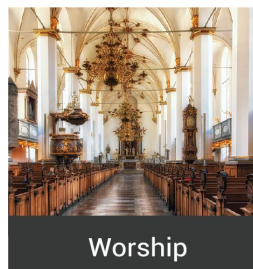
mini-edge SDI is web APP ready, also integrated with TAO Cloud for remote control and restream to at least 4 content platforms at the same time.



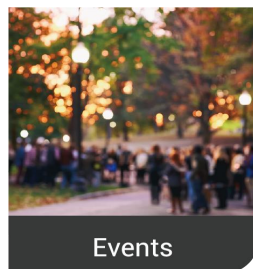
Education



Sports



Worship



Events



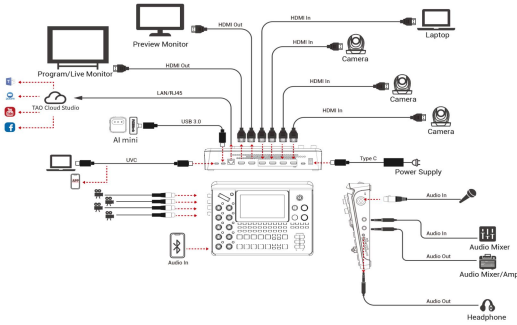
Conference

## Key Features

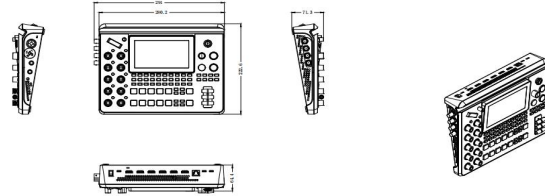
- Embedded 5.5-inch TFT and touchscreen
- 10 input connectors (4 x HDMI 2.0, 4 x 3G-SDI, 2K UVC, and 2K NDI)
- 6-CH customizable video inputs
- Maximum 8 channels for audio mixing
- 2-CH independent HD HDMI
- 2K streaming and live via IP and UVC

- Streaming supports NDI | HX3
- Streaming and management via RGBlink TAO Cloud
- Manual real-time control of PTZ cameras, such as zoom in/out, rotation, and focus, via VISCA or NDI
- Third-party control and integration via free RGBlink Central Control Protocol

## Application



## Dimension



## Specification

<b>Connectors</b>	Input	HDMI 4K	4 × HDMI-A	
		UVC (Webcam)	1 × USB-C	
		SDI 3G	4 × SDI	
		NDI	1 × NDI	
	Output	HDMI 2K	2 × HDMI-A	
		USB (Record)	1 × USB-C	
	USB (Stream)	1 × USB-C		
	NDI	1 × NDI		
<b>Audio</b>	MIC IN	1 × 6.35mm XLR + TS Jack (48V Phantom Power)		
	LINE IN	1 × 6.35mm TRS Jack		
	OUT	1 × 6.35mm TRS Jack		
<b>Communication</b>	LAN	1 × RJ45		
	Power	Power Supply	1 × USB-C	
<b>Performance</b>	Input Resolution	HDMI	1280 × 720@50/59.94/60   1024 × 768@60   1280 × 768@60   1280 × 800@60   1280 × 1024@60   1360 × 768@60   1366 × 768@60   1440 × 900@60   1600 × 1200@60   1600 × 1200@60   1680 × 1050@60   1920 × 1200@60   1920 × 1080i@50/59.94/60   1920 × 1080p@23.98/24/25/29.97/30/50/59.94/60   3840 × 2160p@30/50/60   4096x2160@30/50/60	
	Output Resolution	HDMI/USB (Webcam)	1280 × 720@50/60   1920 × 1080@24/25/30/50/60	
	<b>Video</b>	Video Formats	HDMI 2.0   HDCP 2.2	
		Grayscale Processing	10bit	
		Video Sampling	4:4:4 YUV	
		Video Latency	<4 frames	
	<b>Audio</b>	Line In Delay	up to 8 frames	
		Audio Format	HDMI	Linear PCM, 24 bits/48 kHz, 2 ch
			USB	Linear PCM, 16 bits/48 kHz, 2 ch
	<b>Record/Storage</b>	Record Formats	MP4	
Disk Formats		FAT32(≤32 GB)   exFAT(64GB~2T)		
<b>Supported Standards</b>		HDMI	2.0	
	USB	3.0		
	H.265	ITU-T H.265/ ISO/IEC 23008-2		
<b>Power</b>	Compatibility	USB Power Delivery (PD) 3.0		
	Supported Cables	Certified USB PD Aware		
	Input Voltage	Type-C 12V/3A		
	Maximum Power	36W		
<b>Environment</b>	Temperature	0°C~45°C		
	Humidity	10%~85% RH		
<b>Physical</b>	Net Weight	1.48kg		
	Packaged Weight	2.80kg		
	Net Dimension	280.0mm × 220.0mm × 67.0mm		
	Packaged Dimension	332.0mm × 238.5mm × 109.0mm		

## Order Codes

Order Codes	Item
230-0008-01-0	mini-edge SDI

[1] Recommended but not limited to 2TB.

[2] Simultaneously streaming on multiple platforms depends on the network.

## Contact us

Tel: +86-592-5771197

Fax: +86-592-5788216

E-mail: sales@rgbink.com

Headquarter: Room 601A, No. 37-3 Banshang community, Building 3, Xinke Plaza, Torch Hi-Tech Industrial Development Zone, Xiamen, China

**RGBlink**  
www.rgbink.com

