

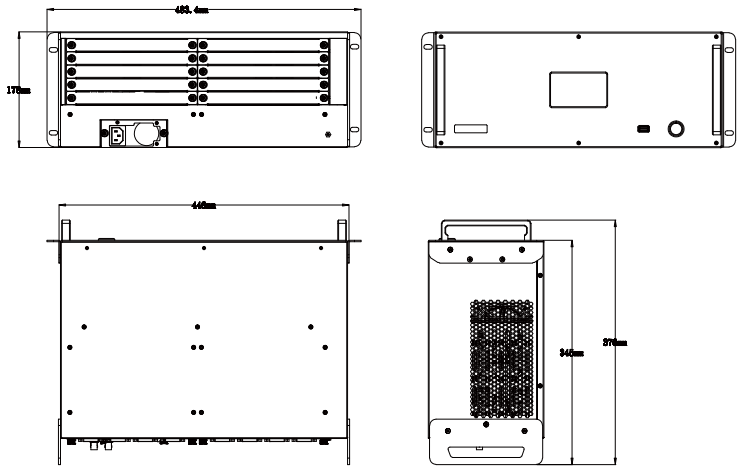
Specification

| | | | | | | |
|---------------------|--------------------|---|--|-----------------------|----------------|------------------|
| Model | FLEXpro16 | | | | | |
| Specification | 4U | | | | | |
| Input Slots | 4 | | | | | |
| Output Slots | 4 | | | | | |
| PVW Sloy | 1 | | | | | |
| Communication Slot | 1 | | | | | |
| Connectors | Input | Optional | HDMI 1.3 | 4×HDMI-A | SDI (SD/HD/3G) | 8×BNC 4 In/4Loop |
| | Output | Optional | HDMI 1.3 | 4×HDMI-A | SDI (SD/HD/3G) | 4×BNC 4 |
| | Communication | Optional | PVW | 1×HDMI-A | H.265 | 1xRJ45 |
| | | | LAN | 1xRJ45 | RS232 | 1xRJ45 |
| | | | Genlock | 2xBNC (1 In 1 Loop) | | |
| | PVW | Optional | HDMI | 2×HDMI-A | Dante | 1xRJ45 |
| Dante Backup | | | 1×RJ45 | | | |
| Performance | Input Resolutions | Automatic recognition | | | | |
| | | HDMI 1.3 | | | | |
| | | SMPTE | 720p@50/60 1080p@25/30/50/60 | | | |
| | | VESA | 800×600@60 1024×768@60 1280×720@25/30/50/60 1280×800@60 1280×1024@60 1360×768@60 1440×900@60 1680×1050@60 1920×1080@25/30/50/59.94/60 | | | |
| | | SDI (SD/HD/3G) | | | | |
| | | SMPTE | 720p@50/60 1080p@23.98/29.97/25/30/50/59.94/60 1080i@50/59.94/60 | | | |
| | Output Resolutions | Select from below or configure customized | | | | |
| | | HDMI1.3 | | | | |
| | | SMPTE | 720p@50/60 1080p@25/30/50/60 | | | |
| | | VESA | 1024×768@60 1280×1024@60 1920×1080@25/30/50/59.94/60 | | | |
| | | SDI (SD/HD/3G) | | | | |
| | | SMPTE | 720p@50/60 1080p@23.98/29.97/25/30/50/59.94/60 1080i@50/59.94/60 | | | |
| Supported Standards | SDI | 3G | H.264 | H.265 | HDMI | 1.3 |
| Power | Input Voltage | AC 100V-240V, 50/60Hz | | | | |
| Working Environment | Temperature | 0°C~70°C | | | | |
| | Humidity | 15%~85% | | | | |
| Storage Environment | Temperature | -10°C~70°C | | | | |
| | Humidity | 15%~85% | | | | |
| Physical | Net Weight | 9kg | | | | |
| | Packaged Weight | 13kg | | | | |
| | Net Dimension | 483.4mm x 376mm x 178mm | | | | |
| | Packaged Dimension | 630mm x 585mm x 295mm | | | | |

Order Codes

| Product Code | Item |
|---------------|--|
| 710-1016-01-0 | FLEXpro16 |
| 790-1004-01-0 | Quad HDMI 1.3 Input Module |
| 790-1004-02-0 | Dual DP 1.2 & Dual HDMI 2.0 Input Module |
| 790-1004-04-0 | Quad 3G-SDI Input Module |
| 790-1004-05-0 | Single Ip Input Module |
| 790-1004-21-0 | PVW Module with Dante |
| 790-1004-22-0 | Quad HDMI 13 Output Module |
| 790-1004-24-0 | Communication Module with PVW |
| 790-1004-26-0 | Dual HDMI 2.0 Output Module |
| 790-1004-29-0 | Quad 3G-SDI Output Module |
| 950-0014-01-0 | 250W Redundant Power Module |

Dimensions



HDMI HDCP™

Proudly designed and manufactured in Xiamen Hi Technology Zone, China
WEB: www.rgblink.com EMAIL: sales@rgblink.com PHONE: +86 592 5771197

RGBlink®



www.rgblink.com

FLEXpro16

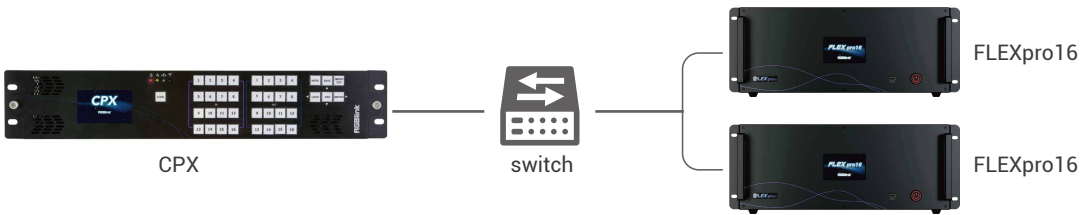
Broadcast quality Hybrid Multiviewer Switcher



FLEXpro16 is a high-performance video image processing system with pure hardware FPGA processing architecture. The whole machine adopts modular configuration, plug-in card structure, can be flexibly configured according to user needs, input and output cards to meet the needs of a variety of video applications on site. Support input and output card hot-swapping, dual power supply hot backup, stable performance, is a set of multiple mixed-signal access, arbitrary distribution, seamless switching, multi-screen processing and other functions in one broadcast-grade multifunctional video conferencing and control all-in-one machine, can be widely used in government agencies, enterprises, public institutions, the military and other organizations of the major meetings, command and control, exhibitions and other fields.

CPX External Panel Control

FLEXpro16 supports network port or serial port to connect to CPX control panel to complete matrix switching, synchronization switching, scene switching, subtitle calling and other full range of operations.CPX supports simultaneous mirroring control of multiple FLEXpro16, and can be customized according to the actual application scenarios of the key functions for programming.



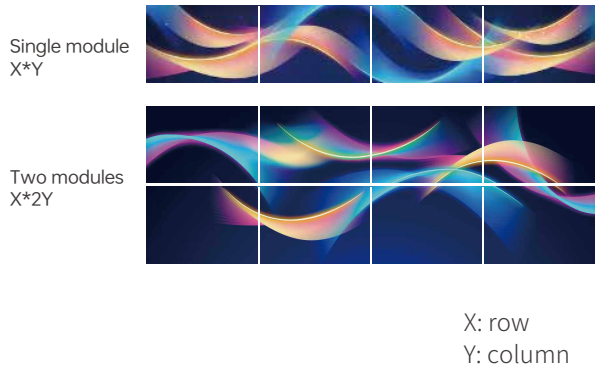
Multi-Layer Multi-window Support

FLEXpro16 offers up to 8 pcs 2K window processing or 4 pcs 4K windows per output channel. Layers can be freely positioned and roam across outputs without consuming additional layer resources, enabling richer multi-window visual effects.



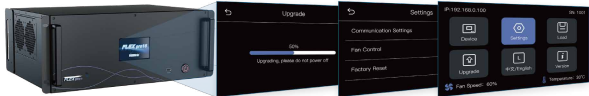
Cross-module Splicing

Single module: Horizontally splits into 1×2 or 1×4 layouts. Dual module: Supports layouts like 2×2, 2×4. Horizontally combine two modules into a row (each containing 2/4 sections). Vertically stacks 2 rows to create a 4/8-section display screen.



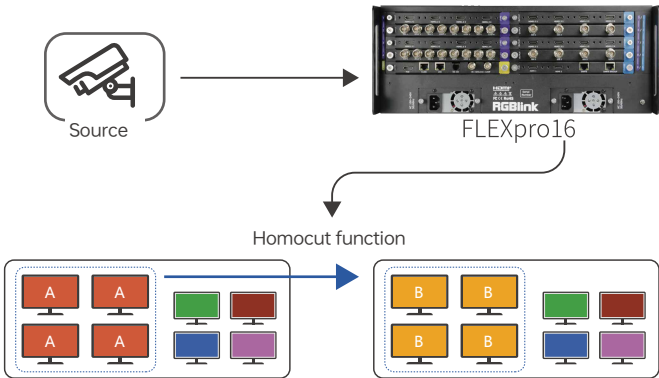
4-inch touch panel control

Comes with a 4-inch touch panel that displays real-time device information status and menu parameter settings. Through the LCD screen to view the input and output board working status, equipment fan speed, program version and other comprehensive information. And can realize the equipment temperature monitoring, over-temperature alarm function to protect the stable work of the equipment.



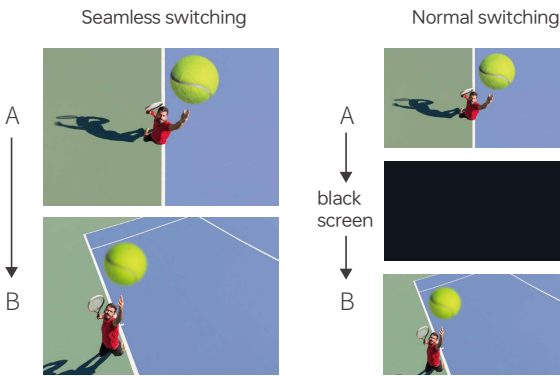
Homocut function

Supports grouping of selected multiple output ports, realizing synchronous switching of the same input signal to multiple output ports with one key.



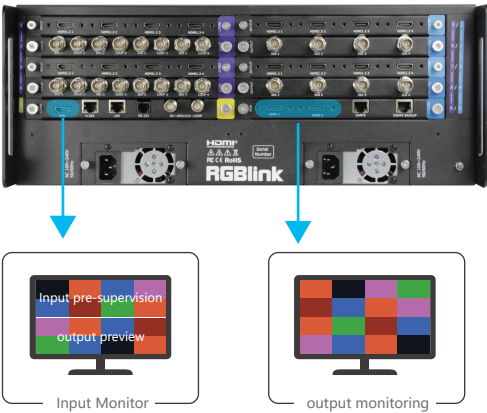
Seamless switching

Matrix input and output or scene switching in any mode can be seamlessly switched.



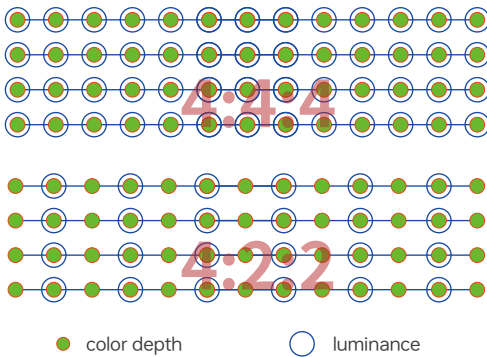
I/O pre-supervision

With 2 HD multi-screen monitor output interface, can simultaneously monitor 16 input sources or 16 output video signals. One of the 16 input source pre-monitoring support 4/9/16 screen split.



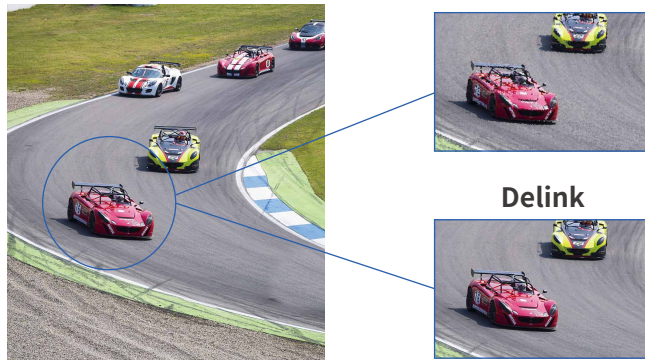
4:4:4 picture quality

HDMI 1.3 input and output support 4:4:4 signal acquisition, processing and output, 12bit color depth, to achieve high-definition image display.SDI input and output support 4:2:2 signal acquisition, processing and output, 10bit color depth.



SDI Deinterlacing

Motion-adaptive de-interlacing processing technology and picture quality enhancement and noise reduction processing solves the jaggedness problem of I to P conversion and realizes picture quality enhancement.



Subtitle display

FLEXpro16 supports scrolling subtitle, static subtitle and station label display. The position, font size, color, background color, and scrolling speed of the top scrolling subtitles can be adjusted at will. The customizable text display and shortcut settings with HD output images allow for more flexible on-site applications.



Dante Audio Monitoring

Dante audio technology integrates media and control on your entire system onto a standard network and enables 16-way, 32-channel volume monitoring in real time. Eliminate bulky and expensive analog cabling and replace it with inexpensive and very common CAT5e, CAT6 wiring for a simple, lightweight and cost-effective solution.



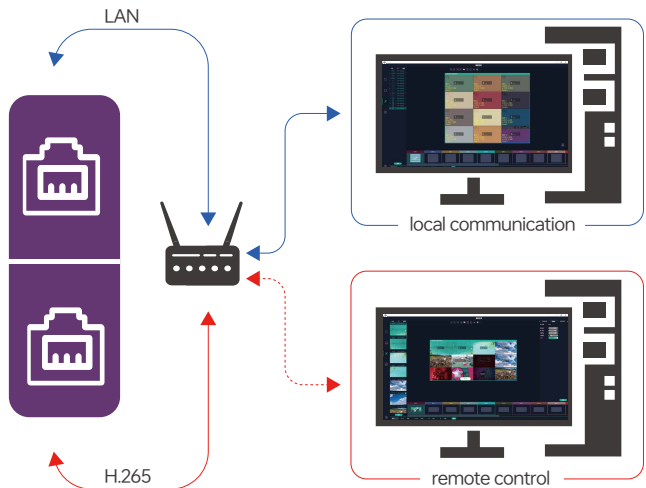
Scene Saving and Recalling

Calls to preset scenes can be made via iMCUS, CPX control panel, LCD control panel and API. Supports up to 256 scene presets, storage and recall.



dual-network interface communication

Stand-alone support for dual-port communication: 1 local communication port, 1 remote control port. In addition to remote control, the remote control port also has the function of H.265 streaming media remote control and monitoring.



Logo Display

Support LOGO overlay function to meet the needs of all kinds of meeting customized logo display.



Multi-Security

FLEXpro16 is designed for high-reliability and high-security application scenarios, with redundant dual power supply design to ensure power supply security; input and output boards support hot backup and hot-swap to quickly resolve board-level failures; and can be configured with machine-level hot backup, with automatic switching between main and backup machines to ensure continuous business operation.

