

# RGBlink®



## mini

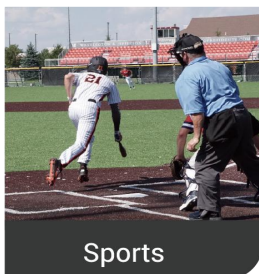
### mini Video Switcher

In July 2025, RGBlink officially launch and deliver the third-generation mini Video Switcher. Building on the legacy of the last 2 generation, the mini achieves another technological breakthrough. It is the streaming industry's first video switcher offering user-customizable features, allowing users to unlock full capabilities through either a monthly subscribe or a lifetime purchase, tailored to their individual demanding in need.

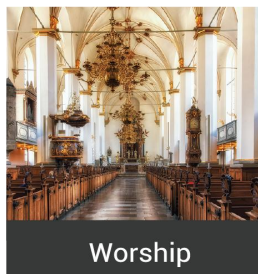
The third-generation mini retains its compact design and all-black casing while introducing wide a range of optional features, including USB-A recording, PTZ control, live streaming via TAO Cloud, and NDI encoding/decoding(coming soon). These enhancements empower users to effortlessly handle event live streaming and content creation, meeting demands for recording and post-production. Additionally, the 2-inch full-color TFT display has been upgraded to a touchscreen, featuring an icon-based menu interface. Users can now directly monitor multiple input sources, unlocking the benefits of intuitive touch control.



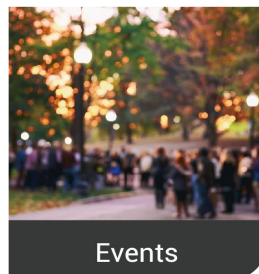
Education



Sports



Worship



Events

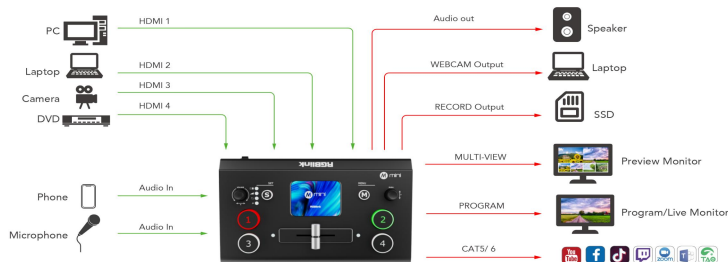


Conference

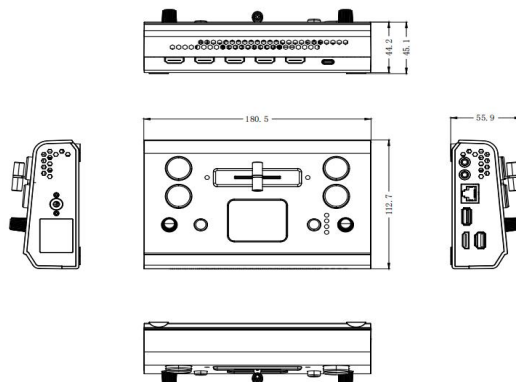
## Key Features

- 4 HDMI inputs, 2 HDMI output
- HDMI output can be set to 6-window Preview, Program or Inputs 1~4
- 2-inch TFT full color touchscreen built in for signal monitoring and menu operation
- Support MIC and LINE audio input, multi-channel mix audio
- Image scaling & cropping
- PIP function including PBP for layout setting
- USB 2.0 recording function, supporting exFAT and FAT32 formats
- T-Bar seamless transition including CUT | FADE
- 15 transition effects
- LOGO overlay
- web APP & open API for remote control
- Air cooling design to ensure 24/7 stable operation
- Integrated design, easy to carry

## Application



## Dimension



## Specification

|                     |                      |  |  |
|---------------------|----------------------|--|--|
| Interface           | Input                | HDMI 2.0                                       | 4×HDMI-A   |
|                     | Output               | HDMI 1.3                                       | 2×HDMI-A   |
|                     |                      | USB 3.0 (Record)                               | 1×USB-A  |
|                     |                      | USB 2.0 (Capture)                              | 1×USB-A  |
|                     | Audio                | In   | 1×3.5mm audio jack   |
|                     |                      | Out  | 1×3.5mm audio jack   |
|                     | Communication        | LAN  | 1×RJ45   |
| Performance         | Power                | Power Supply                                   | 1×USB-C  |
|                     | Input Resolution     | HDMI   | 1280×720p@50/60   1280×768p@60   1280×1024p@60   1360×768p@60   1366×768p@60   1600×900p@60   1920×1080i@50/60   1920×1080p@30/50/60   3840×2160p@23.97/24/25/29.97/30/50/59.94/60 |
|                     | Output Resolution    | HDMI   | 1280×720p@50/60   1920×1080p@24/30/50/60   |
|                     |                      | USB  | 1280×720p@60   1920×1080p@24/25/30/50/60   |
|                     | Color Space          | RGB 8bit   YCbCr 4:4:4 8bit   YcbCr 4:2:2 8bit |  |
|                     | Grayscale Processing | 8bit   |  |
|                     | Video Sampling       | 4:2:2 YUV                                      |  |
|                     | Latency              | <3 frames                                      |  |
| Power               | Support Standards    | HDMI   | 1.3  |
|                     |                      | USB  | 3.0  |
|                     | Input Voltage        | Ethernet                                       | 10/100/1000BaseT   |
|                     |                      | Max Power                                      | 30W  |
| Working Environment | Temperature          | 0℃~60℃   |  |
|                     | Humidity             | 10%~85%  |  |
| Physical            | Weight               | Net  | 0.5kg  |
|                     |                      | Package  | 1.3kg  |
|                     | Dimension            | Net  | 180.5mm × 112.7mm × 55.9mm   |
|                     |                      | Package  | 255mm × 145mm × 85mm   |

## Order Code

| Product Code  | Item    |
|---------------|---------|
| 230-0010-01-0 | mini v3 |

## Contact us

Tel: +86-592-5771197  
 Fax: +86-592-5788216  
 E-mail: [sales@rgbblink.com](mailto:sales@rgbblink.com)  
 Headquarter: Room 601A, No. 37-3 Banshang community, Building 3,  
 Xinke Plaza, Torch Hi-Tech Industrial Development Zone, Xiamen, China  
**RGBlink**  
[www.rgbblink.com](http://www.rgbblink.com)

