



RGBlink®

mini max

Elevating Content Creation to 4K Excellence



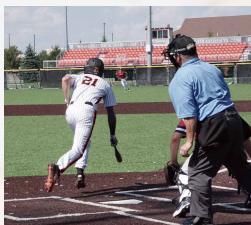
The mini-max 4K All-in-One Video Switcher elevates the mini-series legacy with true 4K operation. It expands upon the mini-edge models with two added 12G-SDI inputs, supporting 4K output, recording, and streaming in one compact unit. A 5.5-inch touchscreen offers multi-view monitoring and menu control, complemented by physical buttons for flexible operation.

With four HDMI 2.0 and two 12G-SDI inputs, plus support for UVC and NDI® sources, it connects seamlessly to a wide range of devices. Dual HDMI outputs allow multi-view or test patterns, and the USB 3.0 port serves as a UVC webcam for direct streaming. Integrated TAO Cloud and Web App support enable remote management and multi-platform broadcasting.

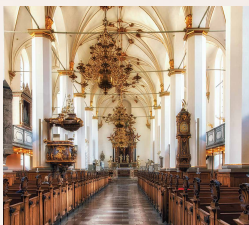
Despite its small size, the mini-max delivers pro features including dynamic output control, audio noise reduction, and PTZ camera control—making it ideal for both live production and remote workflows.



Education



Sport



Worship



Event

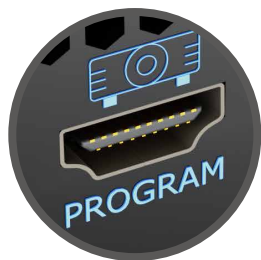


Conference

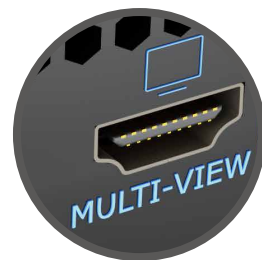


Full-Featured Keyboard Controls at a Glance

The onboard 5.5-inch HD full-color screen monitors all input channels and output images in real time. Full-featured keyboard, fast control of any function.



Configurable HDMI Output for live presentations



HDMI PVW port – configure for multi-view or AUX each input

Take Full Control

Integrated PTZ Camera Control

Forget about having multiple separate control panels for video and camera control. mini-max brings it all together, supporting industry standard VISCA or NDI protocol for PTZ control directly from the mixer. Control up to four separate cameras with pan, tilt, zoom and focus.



Precise Fingertip Control

Integrated joystick provides tactile control for each PTZ camera. Together with the toggle on the front panel, they can control the pan, tilt, zoom and focus of the PTZ camera. Joystick and toggle are additionally dynamically assigned to settings including scale, position and crop for enhanced usability when a layer being controlled.



Professional broadcast SDI input

Longer transmission distance and more professional broadcast SDI camera input.

*12G-SDI supports up to 100 meters, RGBlink laboratory test data.

Pro Color Rendering and Layers

One-Click Chroma Key

Enable presenters to be in virtual studios and environments with Chroma Key.

Select from standard key colours and enable Chroma Key directly on mini-edge SDI without the need for an app. Refine colour selection and tolerances from the touch screen to optimise.

* The device supports keying green and blue colors and the web-side supports keying 6 colors in total.



Pro Level Audio

Capture Every Sound

With two separate insert audio ports, mini-max has got external balanced mic and line level audio covered. All two ports accept TRS 1/4in jacks, with MIC supporting direct XLR connection too. Plus there is 48V phantom power directly from mini-max available too on MIC, negating the need for a separate DI, and instantly making studio mics native connections as they should be.



Follow the Action & Always be In Sync

Set AFV for any HDMI embedded audio so the audio switches with the video source to PVW and PGM automatically.

Configure audio delay for MIC inputs or a camera input to keep audio in sync with the video.



Monitor & Set Live

The professional audio console with dynamic button operation is both eye-catching and convenient. It provides precise control, allowing for easy volume adjustment and enabling one - key mute and monitoring, which brings the user an excellent live-streaming experience.

✂ Bluetooth audio input supports.



Pro Level Video

Sophisticated Multi-Layer Presentation

Assemble visuals with multiple layers of video and graphics. mini-max offers 2 full video layers plus background image, two graphic overlays from the media pool as well.

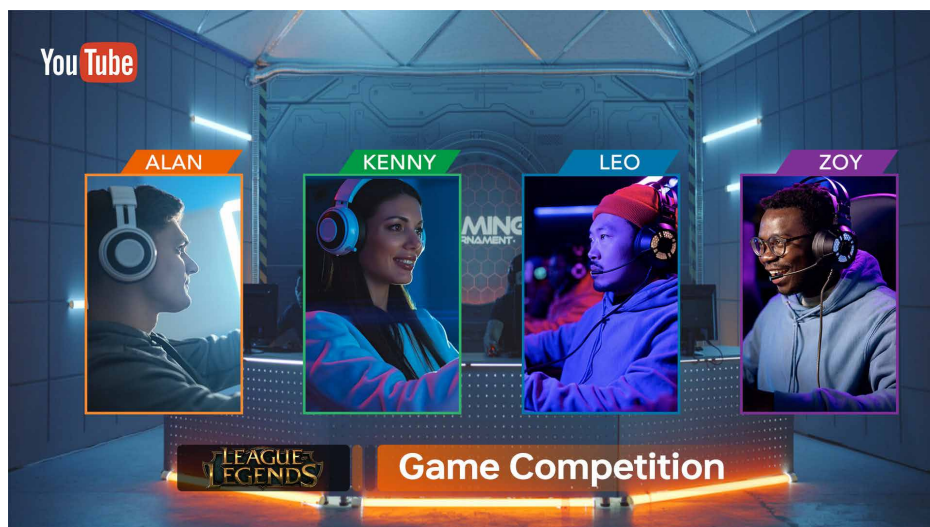


Dynamically Scalable

Each of the two assignable video layers maybe scaled, positioned and cropped with these placed over the background.

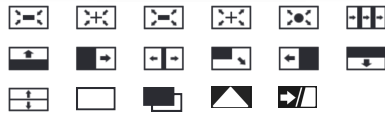
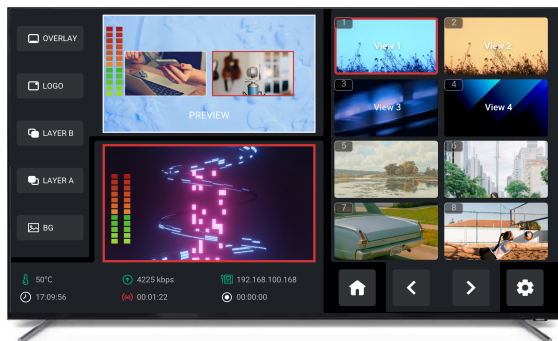
Multiple Layer Sophistication

Besides dual video sources, also add media pool graphic overlays for lower -thirds and branding logos, and switch seamlessly between graphic elements.



Intuitively Interactive Operation

Select any source or preset with control panel thumbnails and iconography that makes mini-max a natural and intuitive way to present and stream.



Transition Like a Pro

mini-max includes multiple DVE transition effects from preset to program, adding sophistication and effect.



Leverage the Power of Presets

mini-max supports saving and quick recall of 16 preset scenes, including graphics, audio, and even the parameters of the PTZ position and focus enabling smooth transitions between scenes.



Go Remote

mini-max web app companion apps for laptop and mobile allow remote use from the mini-max and the video connections.

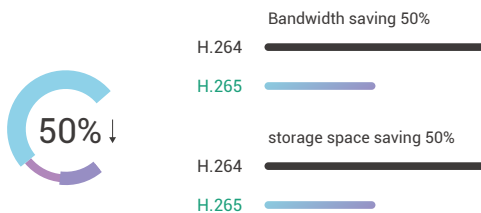
Fully integrated with the RGBlink TAO cloud control streams remote too with TAO cloud.

Pro Streaming

Enhanced Streaming

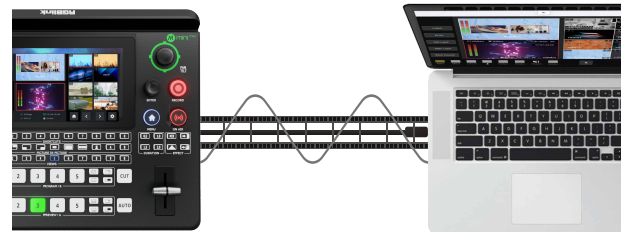
H.265

Take advantage of advanced H.265 compression and encoding for higher performance streams.



live stream

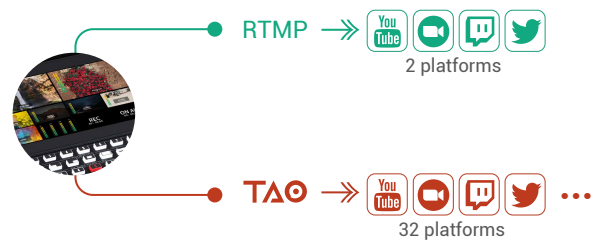
Portrait (vertical) mode for phone live streaming



Capture & Share

Connect mini-max to a laptop for instant recognition as a webcam to enable capture for apps such as OBS and more of others.

Share your presentation on Teams, Zoom™ or any collaboration platform.



RTMP(s)

Stream up to four multiple platforms simultaneously directly over IP without a laptop. And with TAO cloud integrated directly into mini-max, cloud-stream up to 32 platforms or connections at the same time.

Recording

The USB 3.0 recording output interface can be directly connected to a hard drive with a maximum capacity of 2T.

It can simultaneously record while streaming, and the recording of 160Mbps high-definition video can last 100 hours.

Audio and video can be imported and used simply by inserting a USB disk.



PRELIMINARY

Connections

Input	HDMI 2.0	4 × HDMI-A
	UVC (4K Webcam)	1 × USB-C
	12G SDI	2 × BNC
	NDI	1 × RJ45
Output	HDMI 1.3	1 × HDMI-A
	HDMI 2.0	1 × HDMI-A
	USB (4K Record)	1 × USB-C
	USB (4K Capture)	1 × USB-C
	NDI	1 × NDI
Audio	MIC IN 1	1 × 6.35mm XLR + TS Jack (48V Phantom Power)
	MIC IN 2	1 × 6.35mm XLR + TS Jack
	LINE IN	1 × 6.35mm TRS Jack
	OUT	1 × 6.35mm TRS Jack
		1 × 3.5mm mini-Jack
Communication/ Stream/Upgrade	LAN	1 × RJ45
Power	Power Supply	1 × USB-C

Control

Remove Control	TAO Cloud、webAPP
Firmware Update	TAO Cloud

Operational Environment

Temperature	0° to 60° C
Humidity	10-85% RH

Physical Specifications

Weight	Device	0.60 kg
	Packaged	1.38 kg
Dimensions	Device	291×222.6×71.3mm (11.4×8.8×2.8in)
	Packaged	332×238.5×109mm (13.1×9.4×4.3in)

In the Box

mini-max	1
PD power adapter	1
USB-C data cable	2
quick guide	1
OTG cable	1

Order Codes

230-0012-01-0	mini-max
---------------	----------

Performance

Input Resolutions	HDMI 2.0
	SMPTE 720p@50/60 1080p@30/50/60 2160p@30/50/60
	VESA
	1024×768p@60 1280×720p@60 1280×768p@60 1280×800p@60 1280×1024p@60 1360×768p@60 1366×768p@60 1440×900p@60 1600×1200p@60 1680×1050p@60 1920 × 1080p@60 1920 × 1200p@60 3840 × 2160p@60 4096 × 2160p@60
	12G-SDI
	2160p@30/50/60 1080p@30/50/60 1080i@50/59.94/60 720p@50/59.94/60
Output Resolutions	HDMI 1.3
	1080p@60
	HDMI/USB (Webcam)
	1080p@30/50/60 2160p@30/50/60
Supported Standards	HDMI 2.0 HDCP 2.2
	SDI (12G/3G/HD/SD) USB 3.0 NDI HX3 H.265(ITU-T H.265/ ISO/IEC 23008-2)
Color Space	RGB 8bit YCbCr 4:4:4 8bit YCbCr 4:2:2 8bit
Video Latency	<4 frames
Audio Format	PCM/2ch/24bit/48kHz
Sampling Rate	48K
Bitrate	24bit
Record Formats	MP4 (up to 16Mbps)
Disk Formats	FAT32 exFAT
USB Power Delivery	UVC 3.0
Supported Cables	Certified USB PD Aware
Input Voltage	PD 12V/3.3A
Input Voltage	40W